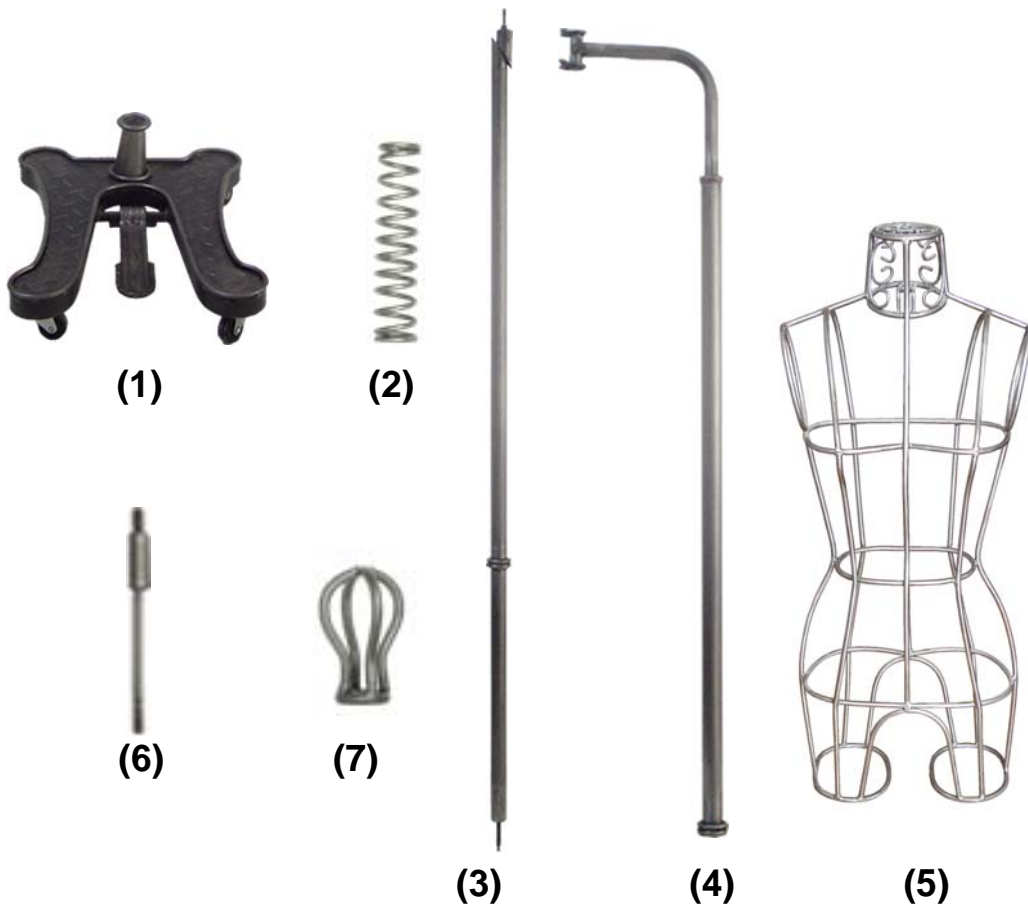


901C Hanging Metal Body Form

Assembling Guide

- | | |
|-----------------------|--------------|
| (1) BASE | 1 pc. |
| (2) SPRING | 1 pc. |
| (3) INNER POLE | 1 pc. |
| (4) OUTER POLE | 1 pc. |
| (5) METAL FORM | 1 pc. |
| (6) PENDANT | 1 pc. |
| (7) TOPPER | 1 pc. |





Step 1

Place BASE firmly on the ground.



Step 2

Insert INNER POLE into the BASE.

*Make sure to twist the screw tightly
After INNER POLE is inserted into
the BASE completely.*

*Make sure to have
INNER POLE standing on
the end of the foot
pedal.*



Step 3

Gently slide in the SPRING to the INNER POLE.



The top of INNER POLE should be aligned like this when stepping down the foot pedal.

When sliding SPRING over INNER POLE, make sure you are stepping down on the foot pedal with the top of INNER POLE aligned.

Step 4

Slide OUTER POLE over INNER POLE.



The top should be aligned like this when stepping down the foot pedal.



When sliding OUTER POLE over INNER POLE, make sure you are stepping down on the foot pedal with the top of INNER POLE aligned.



Step 5

Twist the PENDANT into the METAL FORM,
along with TOPPER.



Step 6

Hang the METAL FORM to the OUTER POLE.
Twist the screw tightly.



*Make sure to twist the screw
tightly after hanging up
the METAL DRESS FORM*

Congratulations !!!

Installation Complete.